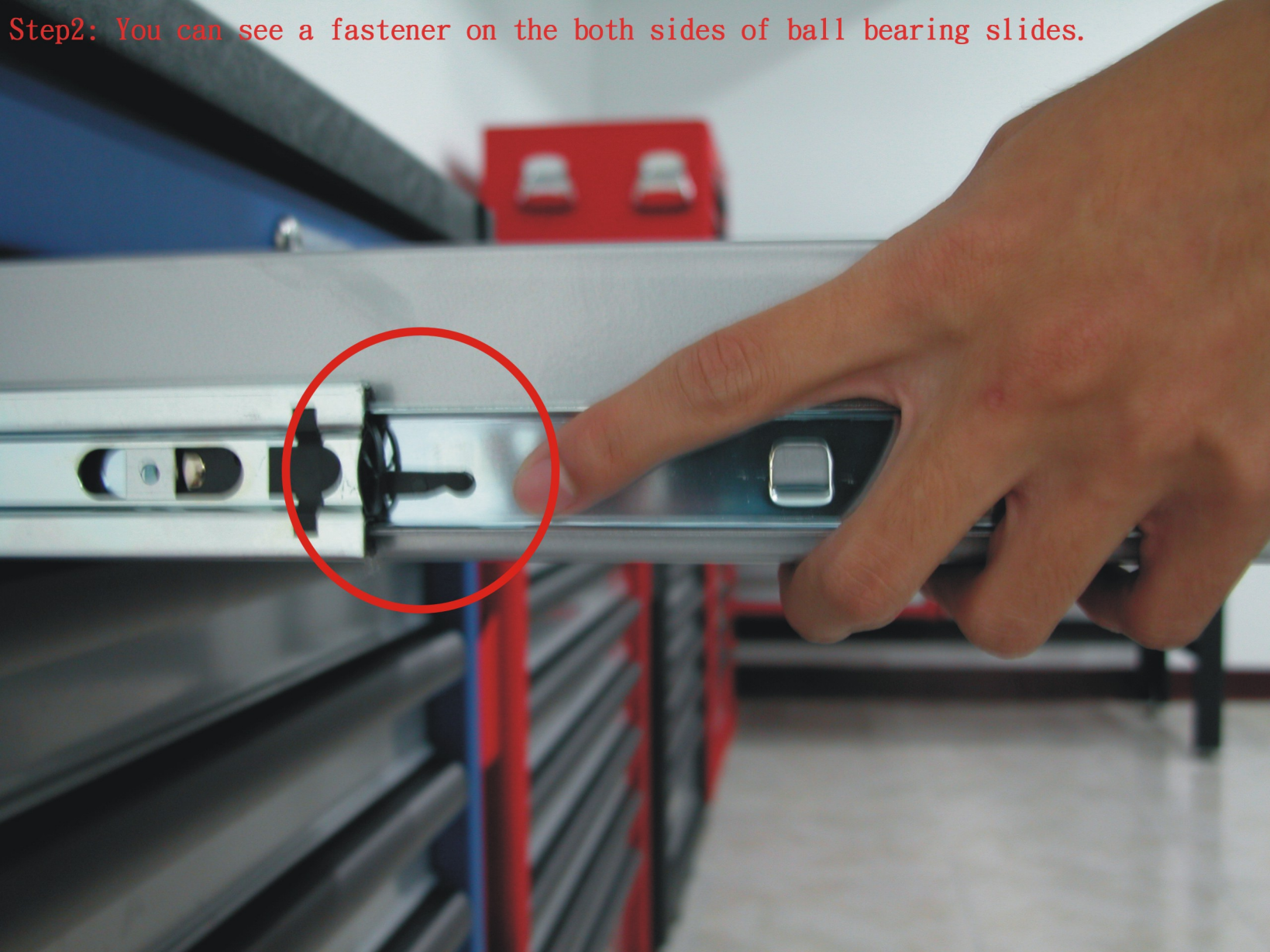


Spep1: Please pull the drawer to the end.



Step2: You can see a fastener on the both sides of ball bearing slides.

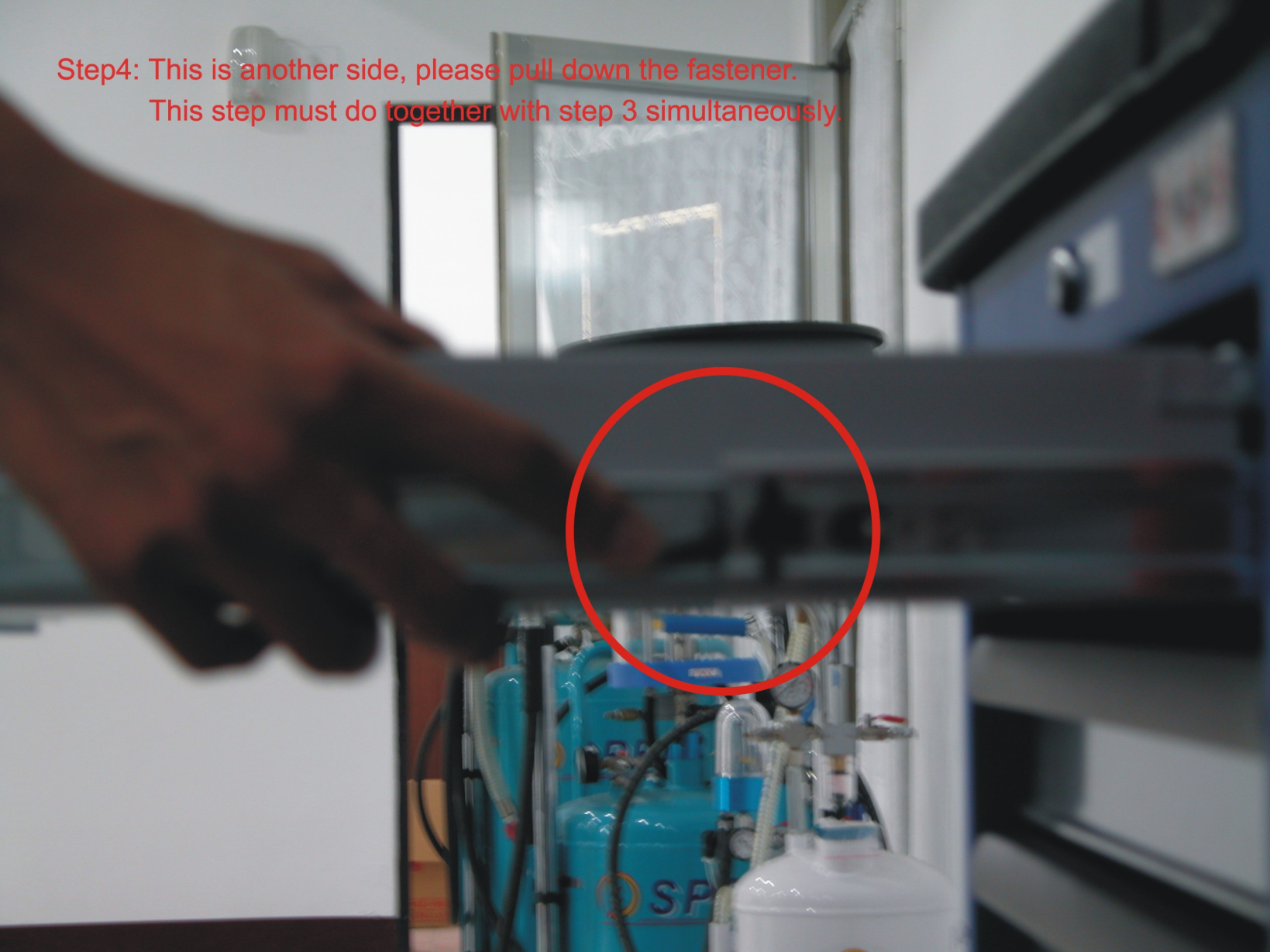


Step3: Pull the fastener up and also pull another side fastener down together.

Ps: Please act at the same time.



Step4: This is another side, please pull down the fastener.
This step must do together with step 3 simultaneously.



Step5: Mantain the both sides action, then pull back the drawer dircetly.



**Step6: Just keep abreast of the bearing slides then pull in the drawer directly.
Will restore the original situation.**

